

6th YCCC 2022 Section A – Clarification 17.08.2022

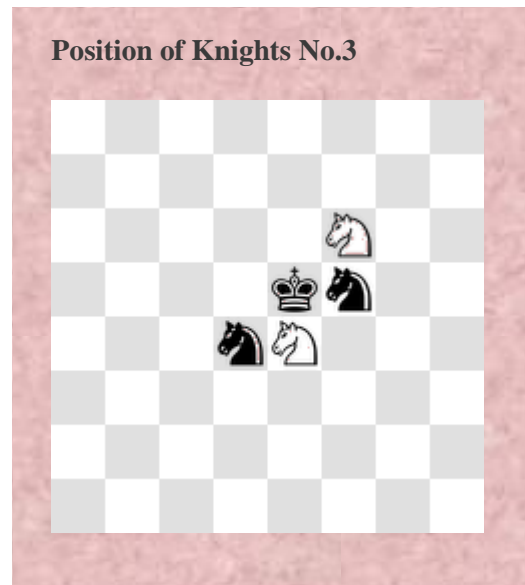
Section A – Mate in two moves

Thematic condition: "Mate in 2 moves, with all four Knights on the squares around the black King in the initial position, the Knights guarding each other, but not attacking each other (as on the two diagrams below). Participants are expected to maximize the use of the Knights in the real play (first move, threat, mate, defence), and virtual play (set-play, tries, refutations, dual-avoidance, etc). Whatever the content, it is desirable to use all four Knights in the solution."

Judge: David Shire

One of the YCCC participants put a question concerning possible starting position →

This matrix matches the wording of the theme **(Mate in 2 moves, with all four Knights on the squares around the black King in the initial position, the Knights guarding each other, but not attacking each other)**, but was not presented among examples.



The Albrecht collection contains only one #2 using Matrix from above:



Mate in 2 moves

1.Se3! 1...exf6 2.Sf7# 1...Kxd6 2.Bxf4# 1...Kxf6/S~ 2.Sg4#
(1...exd6 2.Rf5#/Sg4#)

The Section A judge replied that **HE WILL ACCEPT** problems using Position of Knights No.3.